

1967 CERTICARD Decode Reference



W - Coronet

P - Price class Premium (500)

23 - 2 door hard top

H - 383 CID 4 bbl HP

7 - Year 1966

1 - Lynch road Assembly

200552 - Assembly plant sequence number

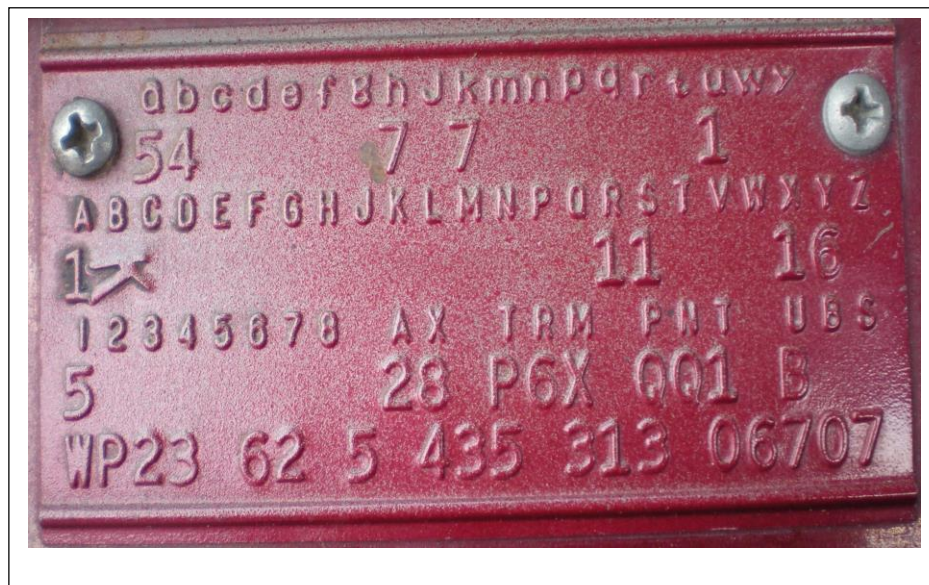
P6X- Premium Black vinyl

QQI - Paint Dark Red Metallic

T5 - Transmission Torqueflight

SG -Axle sure grip

0313 - Scheduled production date March 13



1966 CERTICARD Decode Reference



R - Satellite

P - Price class Premium

27 - Conv

F- 361 CID 2 bbl

6- Year 1966

1 - Lynch Road Assembly

143130- Assembly plant sequence number

H4Y - High vinyl bucket gold

ZZT - Citron Gold Metallic

T5 - Transmission Torqueflight

SG -Axle sure grip

I028 - Scheduled production date October 28th



Note: There is typically a Pentastar embossed in the label on the card.

